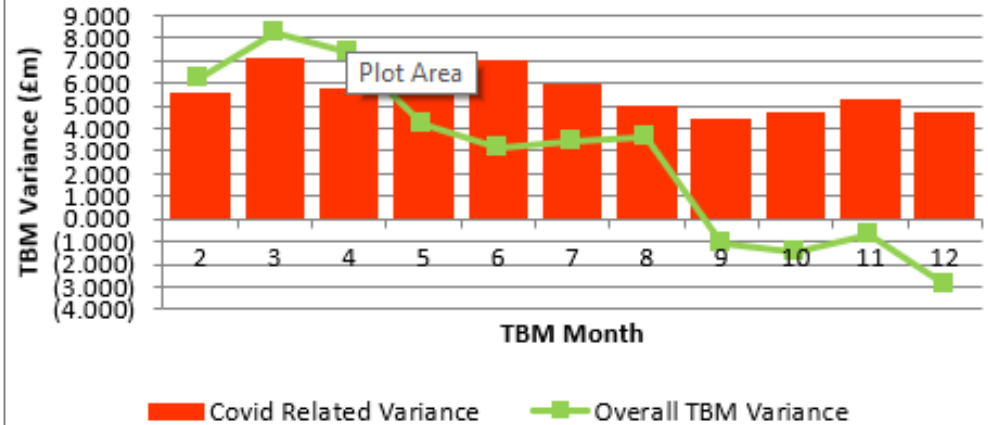


Appendix 1 - Financial Dashboard Summary



COVID Related Variance Compared to Overall TBM Variance

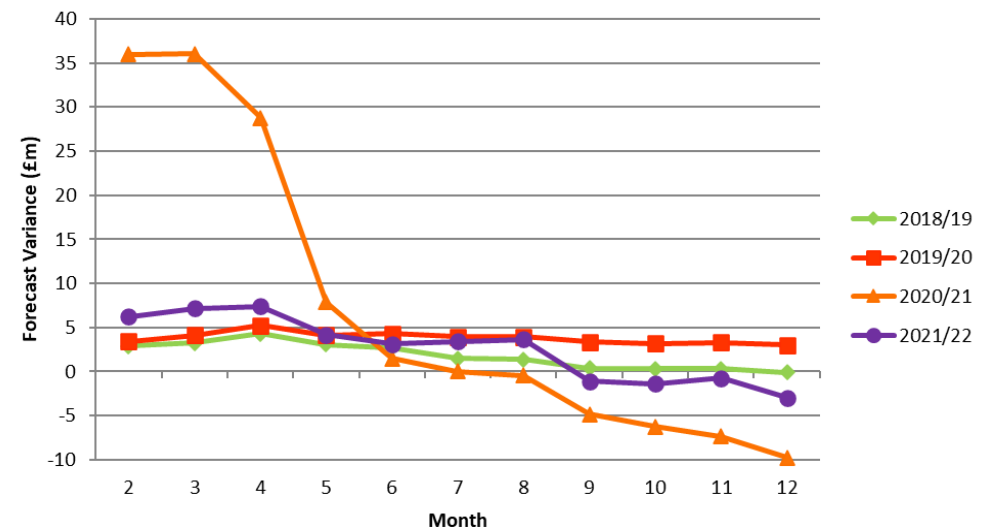


Direction of Travel

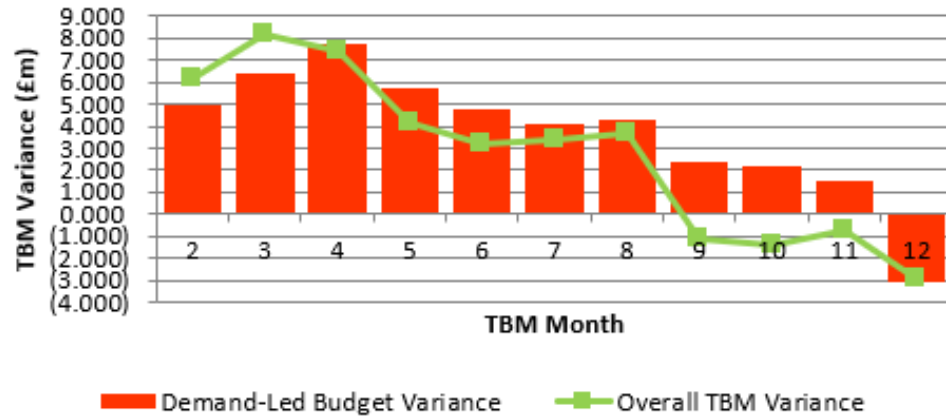
Directorate/Fund	Provisional Variance Month 12 (£'000)	Provisional Variance Month 12 (%)	Change From Month 9	RAG Rating Month 12
General Fund Services:				
Families, Children & Learning	(118)	-0.1%	↑	Green
Health & Adult Social Care	(4,421)	-6.5%	↑	Green
Economy, Environment & Culture	(1,618)	-5.0%	↑	Green
Housing, Neighbourhoods & Communities	930	3.8%	↓	Red
Finance & Resources	1,010	4.5%	↑	Red
Strategy, Governance & Law	(756)	-11.4%	↑	Green
Corporately-held Budgets	2,025	3.5%	↓	Red
Total General Fund	(2,948)	-1.5%	↑	Green
Dedicated Schools Grant (DSG)	(35)	-4.7%	↑	Green
Housing Revenue Account	(33)	0.0%	↑	Green

↑ = Improving position, ↓ = Worsening position

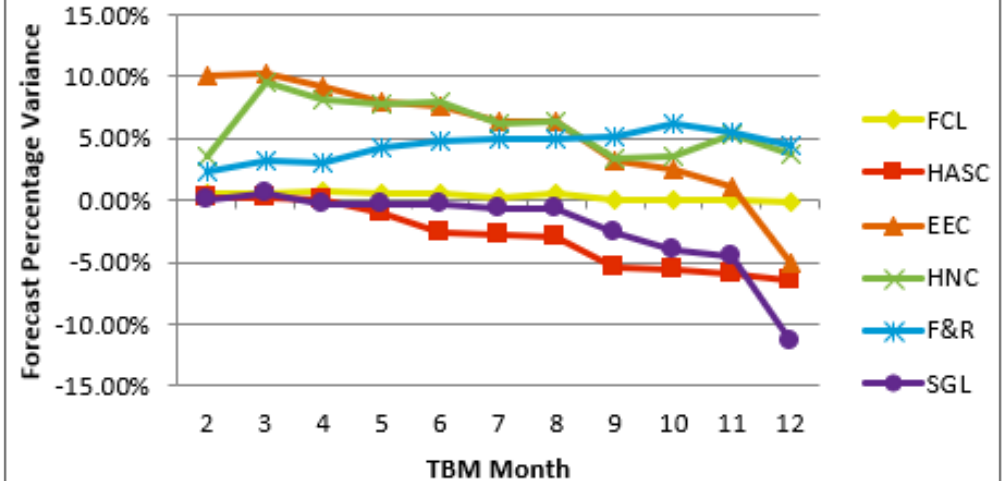
TBM Forecasts



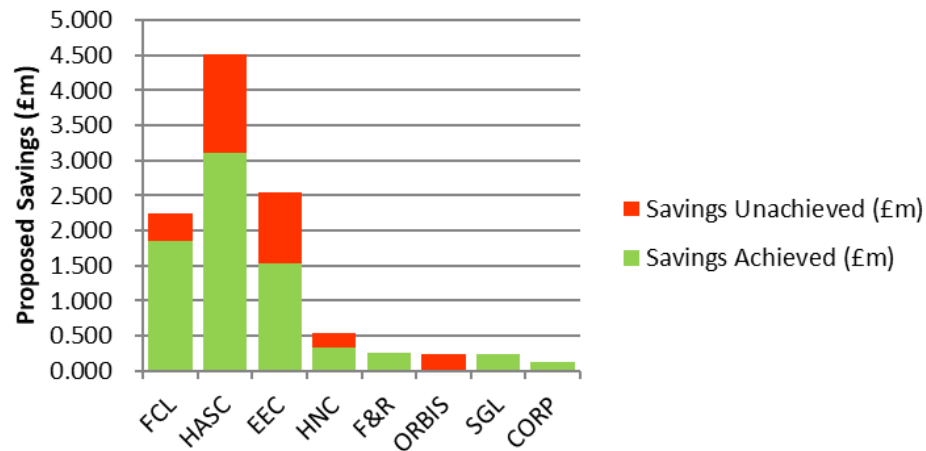
Demand-Led Variance Compared to Overall TBM Variance



Forecast Percentage Variance



Savings Monitoring



TBM Forecast Movement Month 9 to Month 12

